

Vetta II Modulation



Jet Flanger
A/DA Flanger



Analog Chorus
Boss CE-1 Chorus Ensemble BASS TREB



Phaser
MXR Phase 90

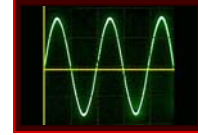


U-Vibe
Uni-vibe BASS TREB

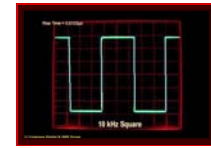
Lumpy Phase



Sine Chorus



Square Chorus



Expo Flange

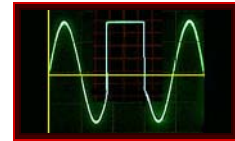


$F(a)=x^a$



Random Chorus

Analog Square



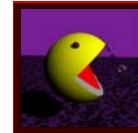
POD Purple X



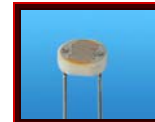
Random S and H
(Sample & Hold)



Tape Eater



Opto Trem



(In Tremolo in Post FX)

Bias Trem

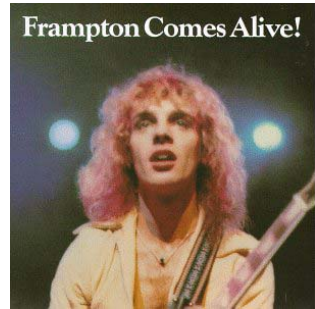


(In Tremolo in Post FX)

Vetta II Modulation



**RotaryDrum+Horn*
Leslie 145**



Hi-Talk*



**RotaryDrum*
Fender Vibratone**



L6 Sweeper*



Warble-Matic*



Stereo Chorus *



Stereo Flange *



Auto Pan*

***=Post Effects Only**